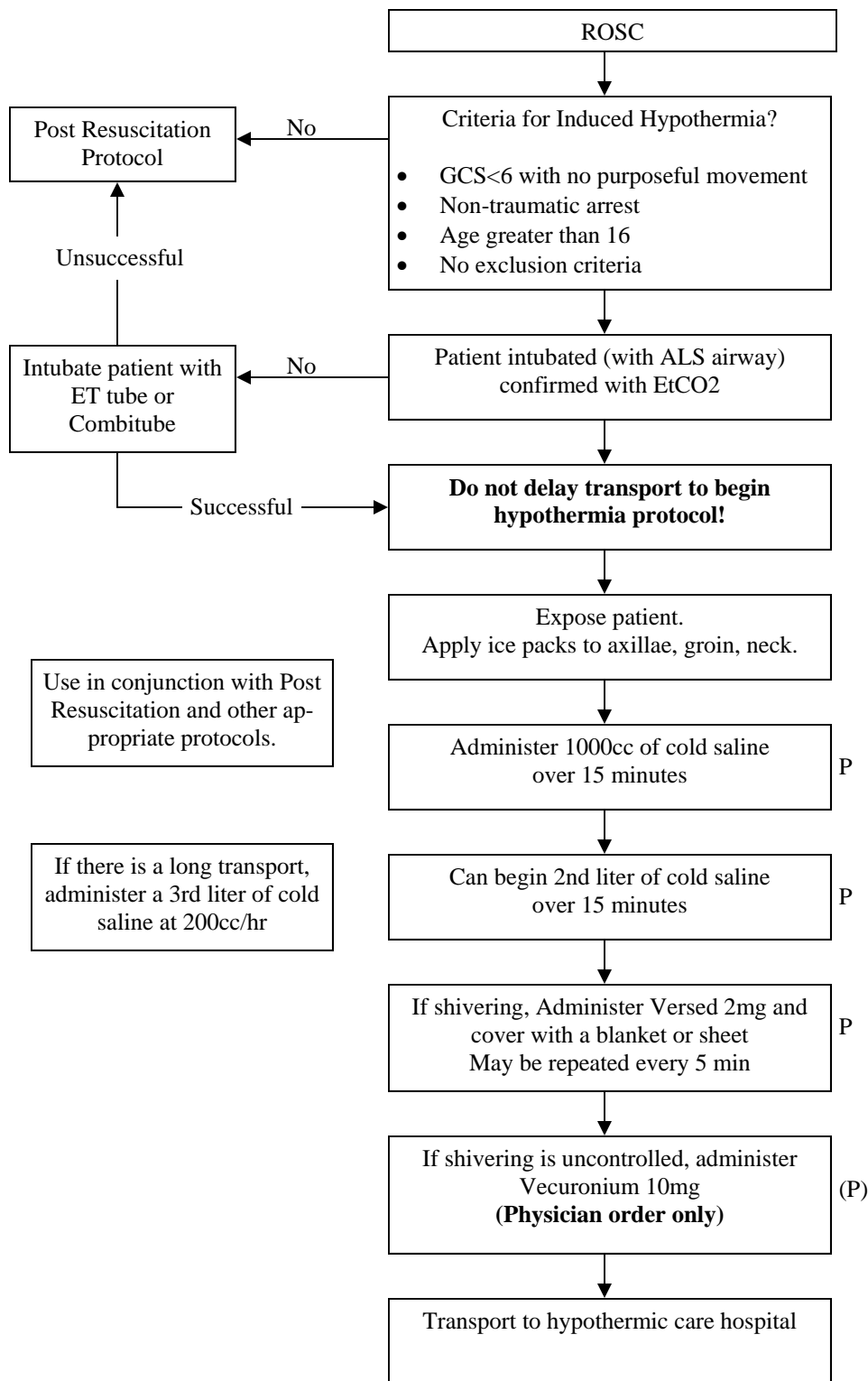


VBEMS Post Arrest Cooling Protocol



Exclusion criteria

If one or more of the following are present, **DO NOT** proceed with the protocol.

- DNR or terminal illness
- Pregnancy
- Known bleeding disorder
- Known infection
- Recent major surgery
- Drug intoxication
- Diminished neuro status prior to cardiac arrest
- Responds to verbal commands
- Unable to maintain BP
- Total down time of more than 1 hour
- Temperature less than 34C/93F

Use in conjunction with Post Resuscitation and other appropriate protocols.

If there is a long transport, administer a 3rd liter of cold saline at 200cc/hr

If patient loses pulse at any time, stop cooling and go to appropriate protocol.

